

**TRESemmé**  
USED BY PROFESSIONALS



PLATINUM  
STRENGTH™

**SALON PROFESSIONAL**

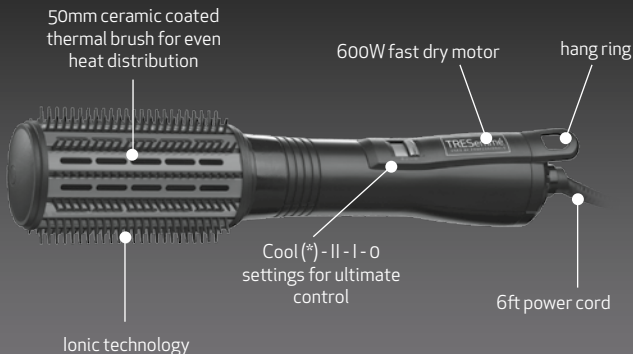
Volume Styler

Model: BC2776TSC

# Thank you for buying the TRESemmé Volume Styler

We hope you enjoy using it. From our origins in salons, we have always been driven by a simple truth: every woman deserves to look fabulous without spending a fortune.

TRESemmé is dedicated to creating hair care and styling products that are salon quality without the salon price. Salon inspired, stylist tested products to help you create your own style and experience that salon feeling every day.



# IMPORTANT SAFETY INSTRUCTIONS

When using electrical appliances, especially when children are present, basic safety precautions should always be followed, including the following:

**READ ALL INSTRUCTIONS  
BEFORE USING**  
***KEEP AWAY FROM WATER***

**DANGER** - Any appliance is electrically live even when the switch is off. To reduce the risk of death by electric shock:

- 1. Always unplug appliance immediately after using.**
2. Do not use while bathing or in a shower.
3. Do not place or store appliance where it can fall or be pulled into a tub or sink.
4. Do not place in, or drop into water or other liquids.
5. If an appliance falls into water, unplug it immediately. **Do not reach into the water.**

**WARNING** - To reduce the risk of burns, electrocution, fire, or injury to persons:

- 1. This appliance should never be left unattended when plugged in. Do not pull, twist, or wrap line cord around appliance.**
- 2. Close supervision is necessary when this appliance is used by, on, or near children or invalids.**
3. Use this appliance only for its intended use as described in this manual. Do not use attachments not recommended by the manufacturer.
- 4. Never operate this appliance if it has a damaged cord or**

**plug, if it is not working properly, if it has been dropped or damaged or dropped into water. Return the appliance to an authorized service centre for examination and repair.**

5. Keep the cord away from heated surfaces. Do not wrap the cord around appliance.

6. Never block the air openings of the appliance or place it on a soft surface, such as a bed or couch, where the air openings may be blocked. Keep the air openings free of lint, hair, and the like.

7. Never use while sleeping.

8. Never drop or insert any object into any opening or hose.

9. Do not use outdoors or operate where aerosol (spray) products are being used or where oxygen is being administered.

10. Do not use an extension cord with this appliance.

11. Do not direct hot air toward eyes or other heat sensitive areas.

12. Attachments may be hot during use. Allow them to cool before handling.

13. Do not place appliance on any surface while it is operating.

14. While using the appliance, keep your hair away from the air inlets.

15. Do not operate with a voltage converter.

16. This appliance was set at the factory to operate at 125 volts.

**SAVE THESE  
INSTRUCTIONS**

# How to use your new TRESemmé Volume Styler

Towel dry and detangle the hair.

- Use TRESemmé Heat Defence Styling Spray for heat protection up to 230°C and then use the TRESemmé 24 Hour Body Amplifying Mousse on damp hair for ultimate sky high volume.
- Separate your hair into manageable sections and place the large ceramic barrel into your hair, as close to the roots as possible.
- Choose the setting that best suits your hair and the style you want to achieve.
- Use setting 'I' for cooler drying and less heat, ideal for shorter styles and finer hair.
- Use setting 'II' for faster drying and more heat, ideal for long styles and thicker, more coarse hair.
- Use the brush to lift the hair at the roots as you dry.
- Move the styler down through the hair, gently brushing the hair as you dry.
- Finally, select the cool setting ' \* ' using the switch, to set your style.
- Repeat as necessary.
- After use, switch off the styler and remove plug from socket.
- Allow to cool before storing away

## **Ionic Technology**

Many aspects of modern living, including air conditioning, contact with man-made fibres and air pollution contribute to a build-up of static electricity in the hair. Even brushing and towel drying the hair can increase these levels, causing the surface of the cuticle to become rough. Consequently, hair may have a dull appearance. High levels of static charge cause hair to become "fly-away" and difficult to style. The ion generator in this styler produces a stream of negative ions which act to neutralise the static charge, smoothing the scales on the cuticle for shiny, smooth and manageable hair so you can achieve your desired style easily.

## **IF YOU MUST USE YOUR HOT AIR STYLER IN THE BATHROOM, INSTALL A GFCI\*NOW!**

Your local electrician can help you decide which type is best for you—a portable unit that plugs into the electrical outlet or a permanent unit installed by your electrician. The National Electrical Code now requires GFCI's in the bathrooms, garages, and outdoor outlets of all new homes.

**WHY DO YOU NEED A GFCI?** Electricity and



water don't mix. If your Volume Styler falls into water while it's plugged in, the electric shock can kill you...even if the switch

is "off." A regular fuse or circuit breaker won't protect you under these circumstances. A GFCI offers you far greater protection. A GFCI can save your life! Compared to that, the price is small! Don't wait...install one now!

\*GFCI is a sensitive device which reacts immediately to a small electric current leak by stopping the electricity flow.

# USER MAINTENANCE

Your appliance is virtually maintenance-free. For proper performance, the appliance must be kept clean. Blocked or clogged air intake vents will cause the appliance to overheat. When cleaning is needed, unplug the cord and clean dust and lint from air intake openings with a small brush attachment. The outer surface of the appliance should be wiped clean with a cloth only. If abnormal conditions occur, unplug the appliance, allow it to cool and return it for repair to an authorized service representative only. No repairs should be attempted by the consumer.

## **CAUTION**

NEVER allow the power supply cord to be pulled or twisted. Never wrap the cord around the appliance. Damage will occur at the highflex point of entry into the appliance, causing it to rupture and short circuit. Inspect the cord frequently for damage. STOP USE IMMEDIATELY if damage is visible or if unit stops or operates intermittently.

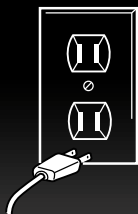
## **STORAGE**

Important When not in use, your appliance should be disconnected and stored in a safe, dry location, out of reach of children. Do not wrap line cord around the appliance. Allow the cord to hang or lie loose and straight at the point of entry into the appliance.



**WARNING: IF YOU THINK  
THE POWER IS OFF WHEN THE SWITCH  
IS OFF, YOU'RE WRONG.**

**KEEP AWAY  
FROM WATER**



Everyone knows that electricity and water are a dangerous combination. But did you know that an electric appliance is still electrically live even if the switch is off? If the plug is in, the power is on. So when you are not using your appliances, keep them unplugged.

**ALWAYS UNPLUG  
SMALL APPLIANCES**

# LIMITED TWO-YEAR WARRANTY

Conair will repair or replace, at our option, your appliance free of charge for 24 months from the date of purchase if the appliance is defective in workmanship or materials.

To obtain service under this warranty, return the defective product to the service centre listed below, together with your sales slip and \$5.50 for postage and handling. In the absence of a receipt, the warranty period shall be 24 months from the date of manufacture.

ANY IMPLIED WARRANTIES, OBLIGATIONS, OR LIABILITIES, INCLUDING BUT NOT LIMITED TO THE IMPLIED WARRANTY OF MERCHANTABILITY AND FITNESS FOR A PARTICULAR PURPOSE, SHALL BE LIMITED IN DURATION TO THE 24-MONTH DURATION OF THIS WARRANTY.

IN NO EVENT SHALL CONAIR BE LIABLE FOR ANY SPECIAL, INCIDENTAL, OR CONSEQUENTIAL DAMAGES FOR BREACH OF THIS OR ANY OTHER WARRANTY, EXPRESS OR IMPLIED, WHATSOEVER.

This warranty gives you specific legal rights, and you may also have other rights which vary from province to province.

**SERVICE CENTRE :**

CONAIR CONSUMER PRODUCTS ULC

100 Conair Parkway

Woodbridge, ON L4H 0L2

©2014 CONAIR CONSUMER PRODUCTS ULC

For more information on any Conair product

call: 1-800-472-7606

Visit our Web site:

[www.conaircanada.ca](http://www.conaircanada.ca)

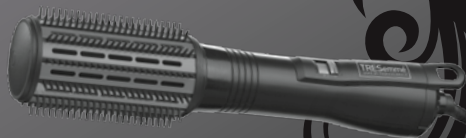
Consumer Call Centre E-mail:

[Consumer\\_Canada@Conair.com](mailto:Consumer_Canada@Conair.com)

**TRESemmé**  
USED BY PROFESSIONALS

**SALON PROFESSIONAL**

# Volume Styler



**PLATINUM  
STRENGTH™**

## **Have a Question?**

*Please do not return this product  
to the retailer.*

## **Call Us First!**

**Our customer service and product  
experts are ready to answer ALL your  
questions.**

**Please call our TOLL-FREE customer  
service number at: 1-800-472-7606  
or visit us online at  
[www.conaircanada.ca](http://www.conaircanada.ca)**

**Instruction & Styling Guide**

Model: BC2776TSC